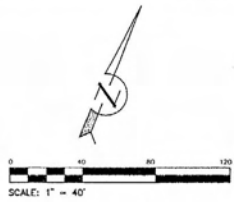


cb

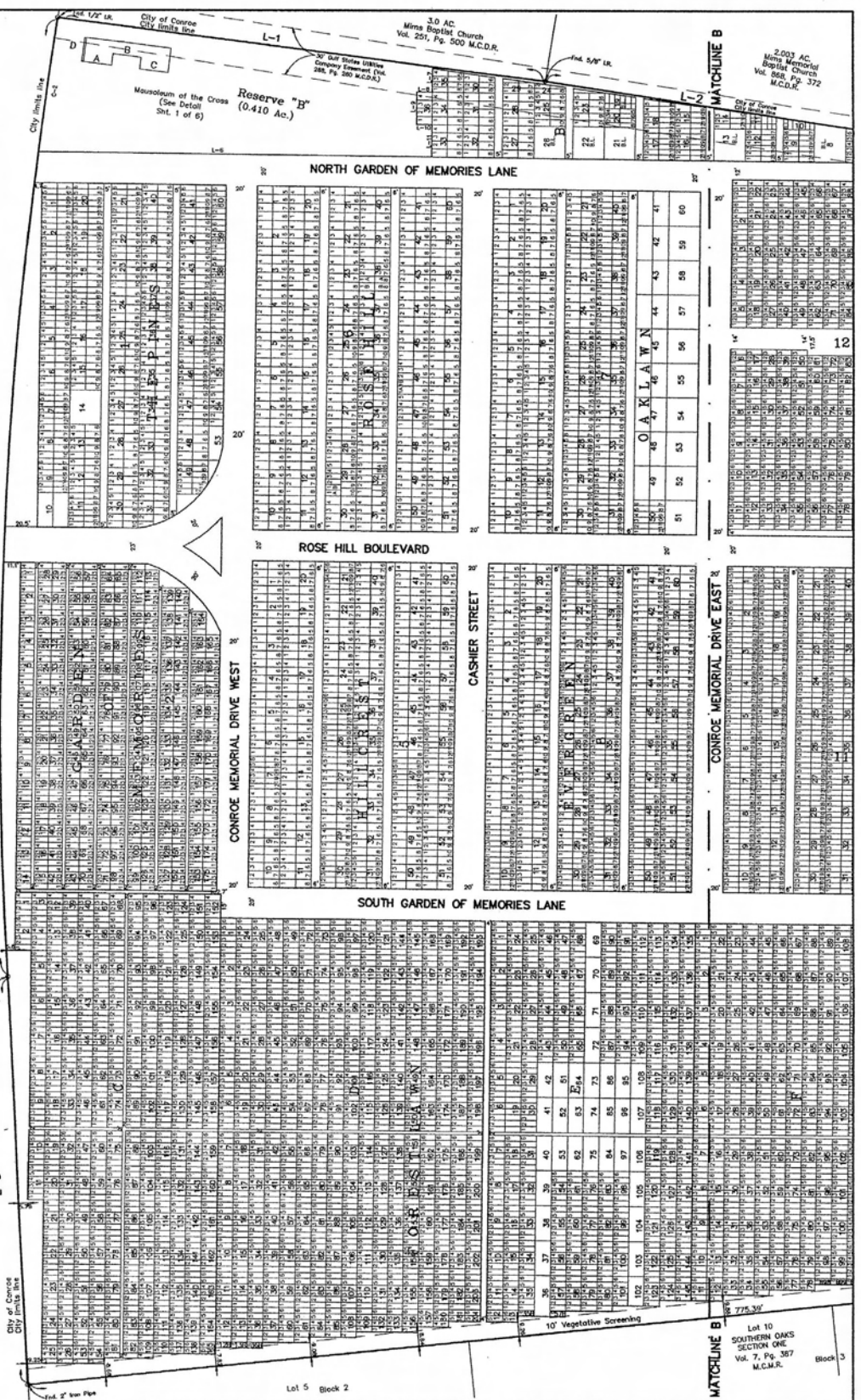


**A PERPETUAL CARE CEMETERY
CONROE MEMORIAL CEMETERY**
31,805 ACRES OF LAND
IN THE JOHN DORSEY SURVEY, A-174
MONTGOMERY COUNTY, TEXAS
BEING A PARTIAL REPLAT OF
CONROE MEMORIAL CEMETERY
VOL. 5, PG. 73 M.C.M.R. &
OF CONROE MEMORIAL CEMETERY
REVISION BLOCK 12, VOL. 5 PG. 180 M.C.M.R.
& CONROE MEMORIAL CEMETERY
BLOCKS 1 & 2 VOL. 5, PG. 53 M.C.M.R.
& CONROE MEMORIAL CEMETERY
VOL. 4, PG. 29 M.C.M.R. & THE
RESIDUAL OF A 31,8103 ACRE TRACT OF LAND
CONTAINING: 16 BLOCKS
12,748 LOTS
200 MAUSOLEUM LOTS
AND 2 RESERVES

OWNER/DEVELOPER
ALDERWOODS (Texas) CEMETERY, INC.
11th Floor, Alpha B 2225 Sheppard Avenue East
Toronto, Ontario Canada, M2J 5C2
(935) 756-2126 & Fax (936) 756-6232

F.M. 1314
(100' S.O.W.)
C-1

JEFFREY MOON
AND ASSOCIATES INC.
LAND SURVEYORS
P.O. Box 2565
Georgetown, TX 77956
(936) 756-2564
FAX (936) 756-5981



Lot 5 Block 2

File # 2002136678

Cabinet T

Sheet 93

SHL 5 of 6