

# Using Wolverine MovieMaker Pro

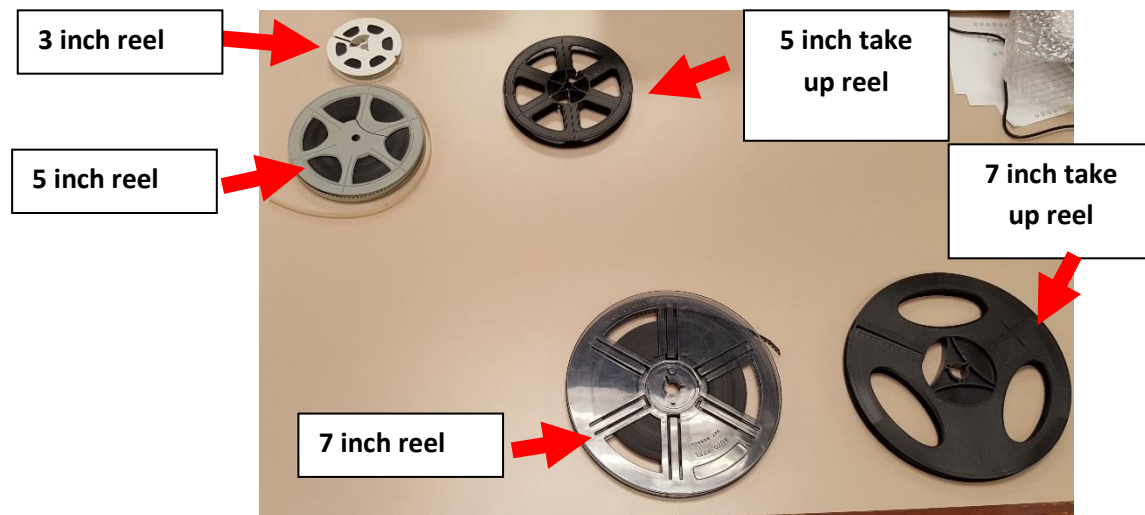
The Wolverine Movie Maker Pro will help you convert your old 8mm and Super 8 film into a digital MPEG-4 movie file at 1080P/20 FPS.

**NOTE : A USB Flash Drive is required to save your movie files.**

The following is a step-by-step guide that will walk you through how to use the Movie Maker Pro to convert your 8mm and Super 8 films.

## Step –by –Step Guide

1. Determine which size take-up reel to use. Film reels come in three main sizes: 3 in, 5 in, and 7 inch. If your film is 3 inches or 5 inches, use the 5 inch take up reel (smaller one). If your film is on a 7 inch reel, use the 7 inch take up reel (larger one).

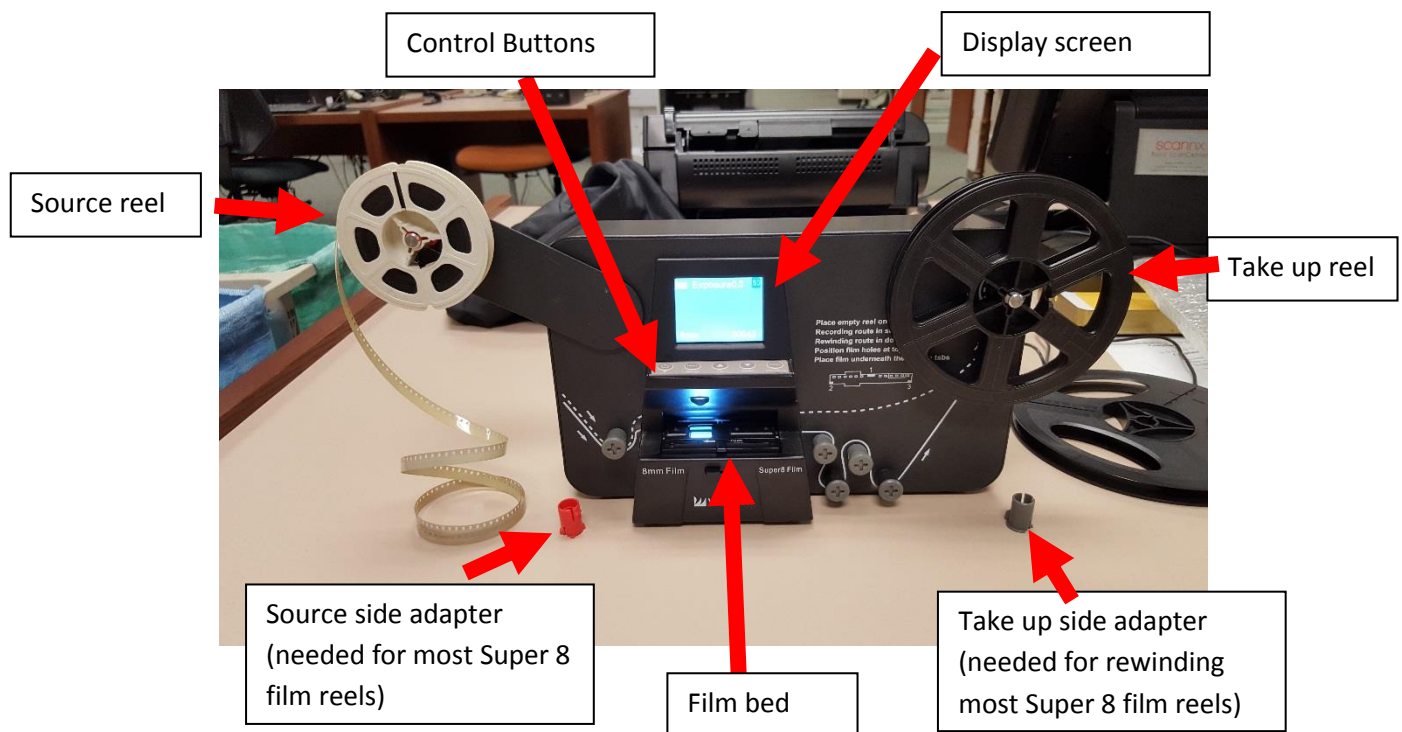


**Note:** The following table provides some approximate recording details for the three film reel sizes:

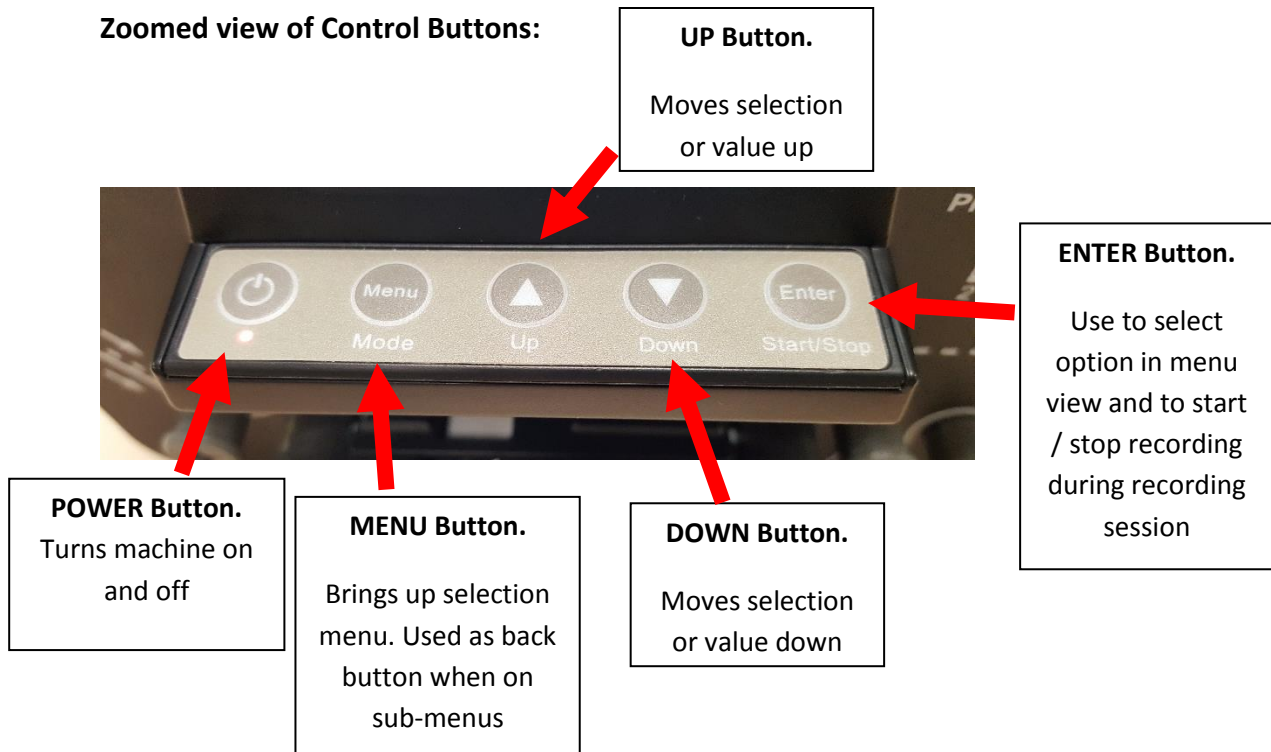
Reel Size	Film length	How long to record	Run-time of Completed video
3 inch	50 ft	25-35 mins	2-3 mins
5 inch	200 ft	1hr 40 mins – 2.5 hours	12-15 mins
7 inch	400 ft	3.5 hours – 4 hours 40 mins	24-30 mins

Please use the above table when determining how long to make your reservation. Daily reservations are limited to 5 hours per person, with weekly reservations limited to 2 sessions per person.

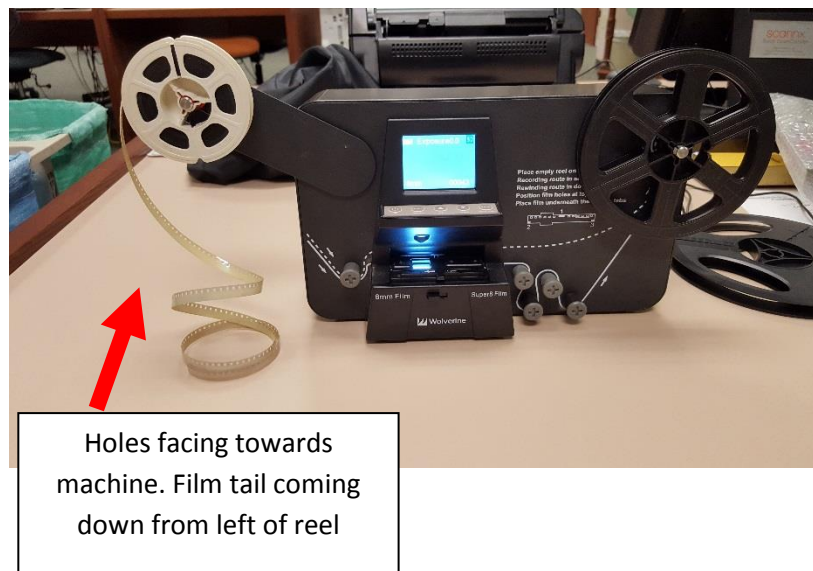
2. Familiarize yourself with the Movie Maker Pro machine



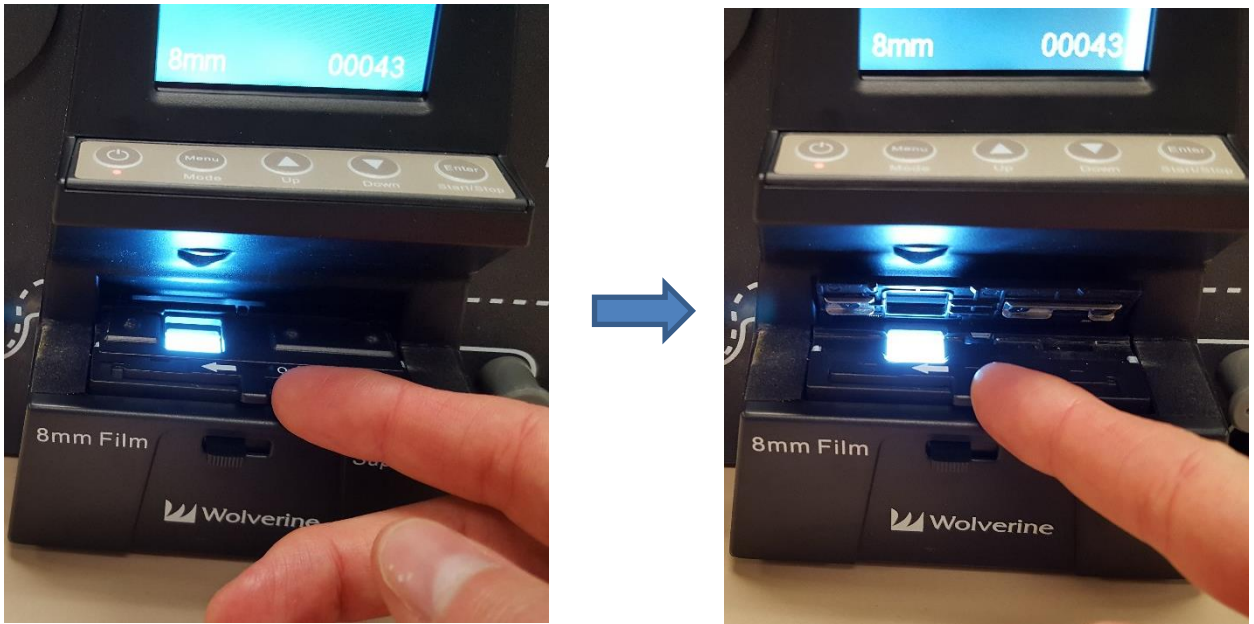
### Zoomed view of Control Buttons:



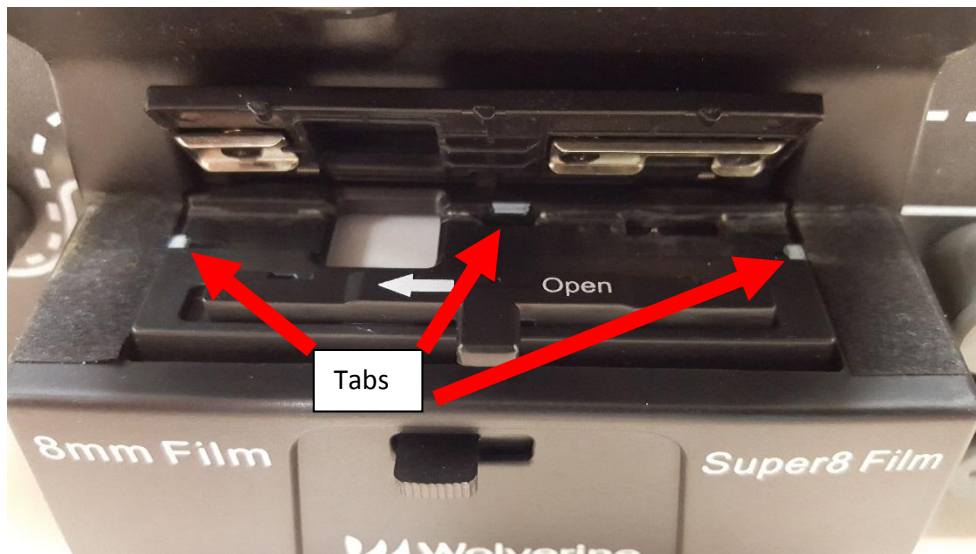
3. Mount source reel onto the left-hand take up arm (red). Reel should be placed onto arm so that the sprocket holes on the film strip are on the side closest to the MovieMaker Pro (away from you). If source reel is installed backwards, it won't advance automatically and will need to be flipped.



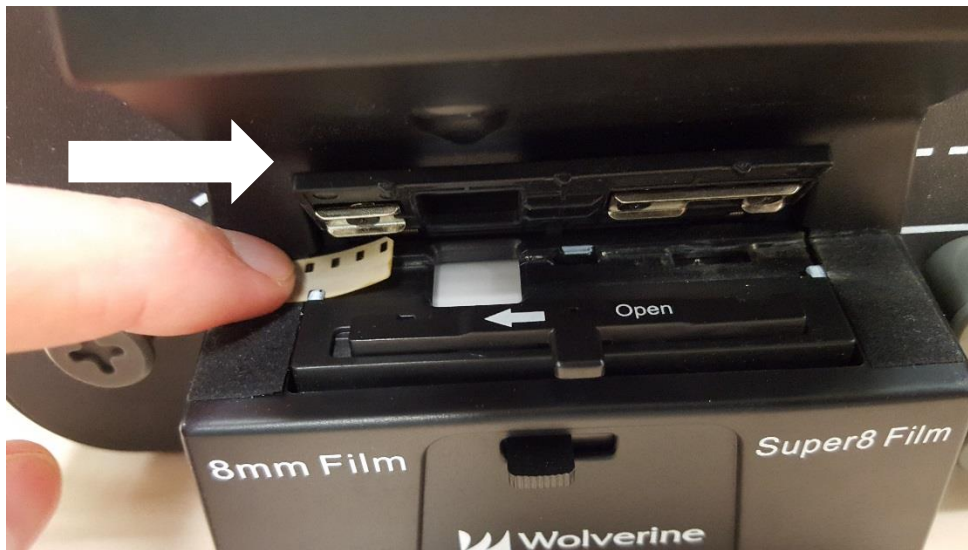
4. Press the POWER button to turn on MovieMaker Pro
5. Press the tab on the film door to the left to flip open the film door.



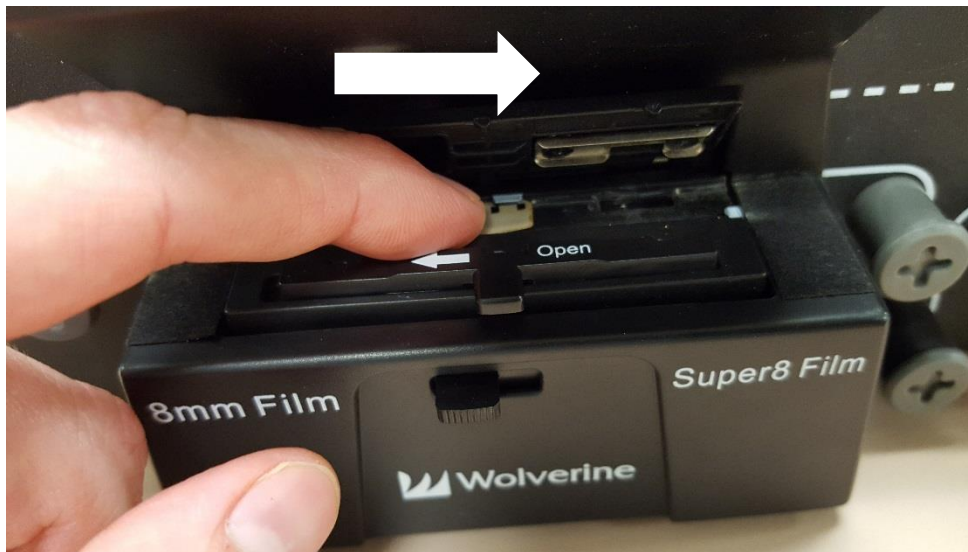
6. Thread the end of the film under the three silver tabs of film tray (one on left side of film tray, one on the right side, and one in the middle). Make sure the film is properly underneath all three tabs or the recorded videos will be jittery.



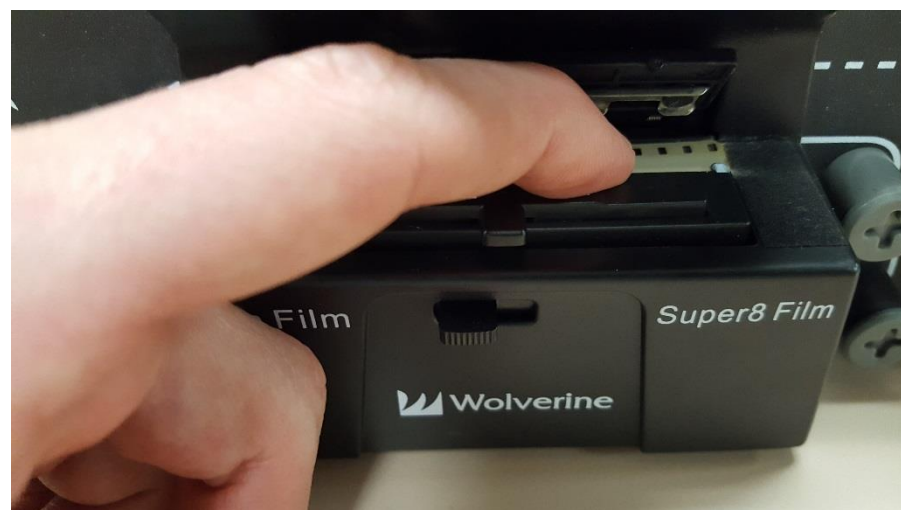




Slide film under left tab



Slide film under middle tab

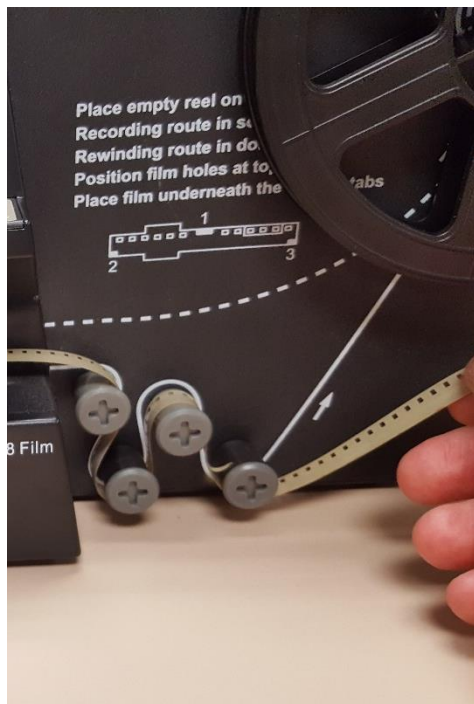


Slide film under right tab

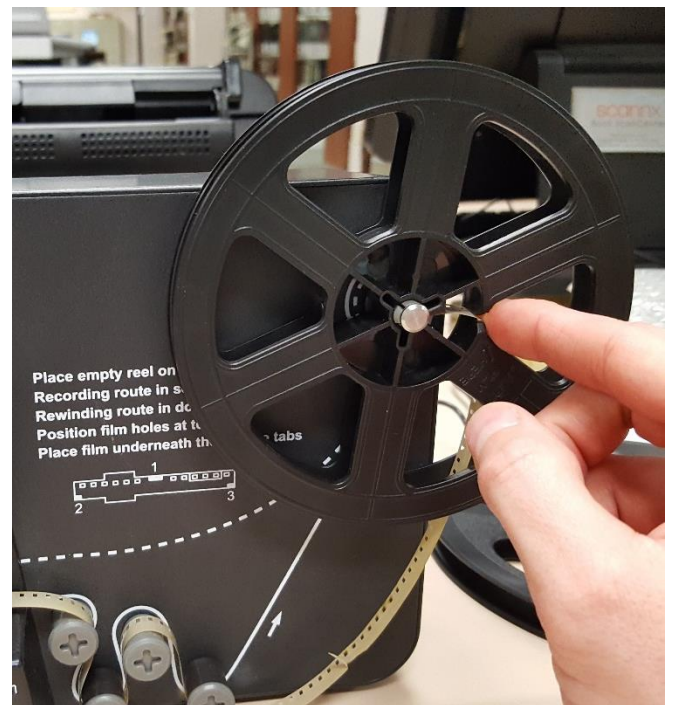
7. Loop film underneath knob on the left of the film tray. Then follow routing diagram to loop film across and under the four knobs on the right side of the machine and onto the take up reel. Wind film counter-clockwise a couple times to secure in place.



1. Loop under left knob next



2. Then follow solid routing diagram across and under knobs on right



3. Then place film into notch on take up reel, winding counter-clockwise a couple times





Double check the path of the film. Make sure film is still under 3 silver tabs and fix excess film that may come off of source reel.

8. Carefully pull film manually from right side of film tray while winding excess film onto the take up reel (right reel) until the first frames of the film and under the viewer window.



9. Close film tray down to secure film into place.

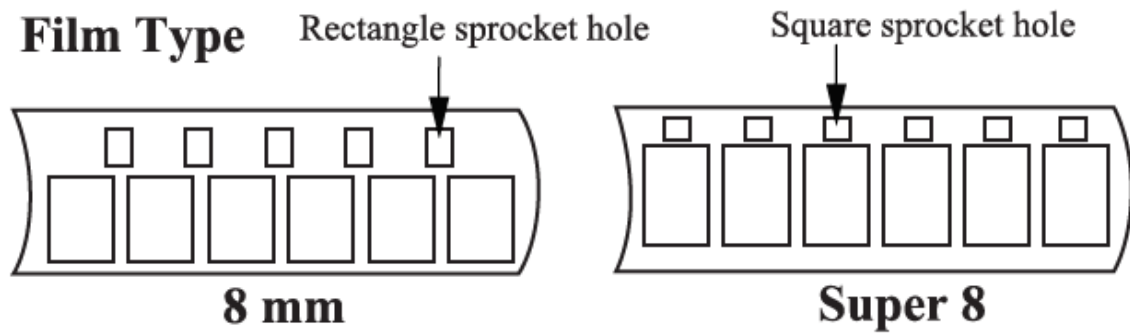


10. The first frame should show on the display screen. Alternately, you can connect the Movie Maker Pro to the television set by connecting the black cable in the back to the **VIDEO OUT** port on the MovieMaker Pro. Turn on the TV with the Panasonic remote and change input to **VIDEO 2**. The unit display will go black and the image will appear on the TV screen.





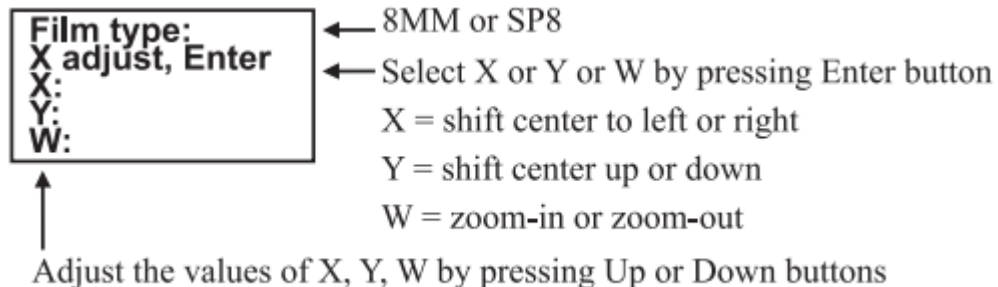
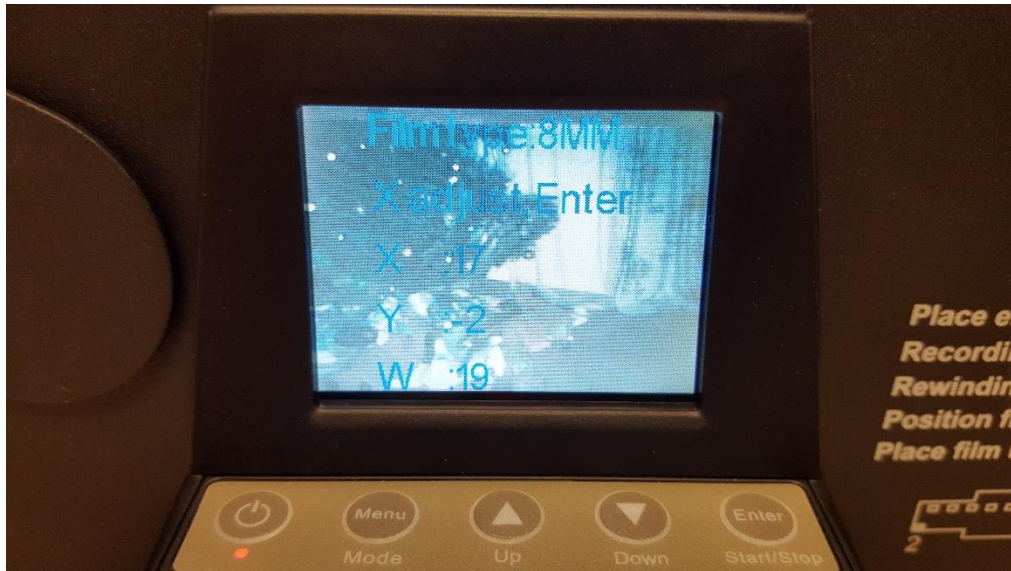
11. Determine whether the film is 8mm or Super 8. Use the guide below to determine, and then push the tab on the front of the movie maker pro to match your film type (left for 8 mm, right for Super 8).



12. You'll next want to verify that the frames are centered and adjust if needed. Click the MENU button to bring up the menu, and click the DOWN arrow until **FRAME ADJ** is selected. Then Click the ENTER button.



13. The film adjustment screen will appear. You can use the UP and DOWN arrow buttons to adjust the values, and the ENTER button to switch between the X (left and right), Y, (up and down) and W (Zoom in, out) values. Click ENTER until W adjust is selected and start by zooming out. Then CENTER the frame in the screen using the X and Y values. Once centered, Click ENTER again until W adjust is selected to zoom in until a single frame appears on the viewer. Once adjustment is finished click the MENU button to exit out of Frame adjust mode. The machine will cycle a few frames automatically.



14. You are now ready to begin the recording process. Click the MENU button and navigate the selection to **RECORD**. Then press the ENTER button to select.



15. The screen below will appear. Verify you have the film type lever pushed the appropriate way. Then click ENTER once more to begin the recording process.



16. The film will automatically advance and record. If the film sticks you might need to stop the recording process (CLICK ENTER AGAIN), open the film tray, and manually advance the film a few frames. Close the film tray again and click ENTER to start the recording process again. (NOTE : this will separate your film into two separate movie files. You can use video editing software to merge them into a single movie later if you wish)





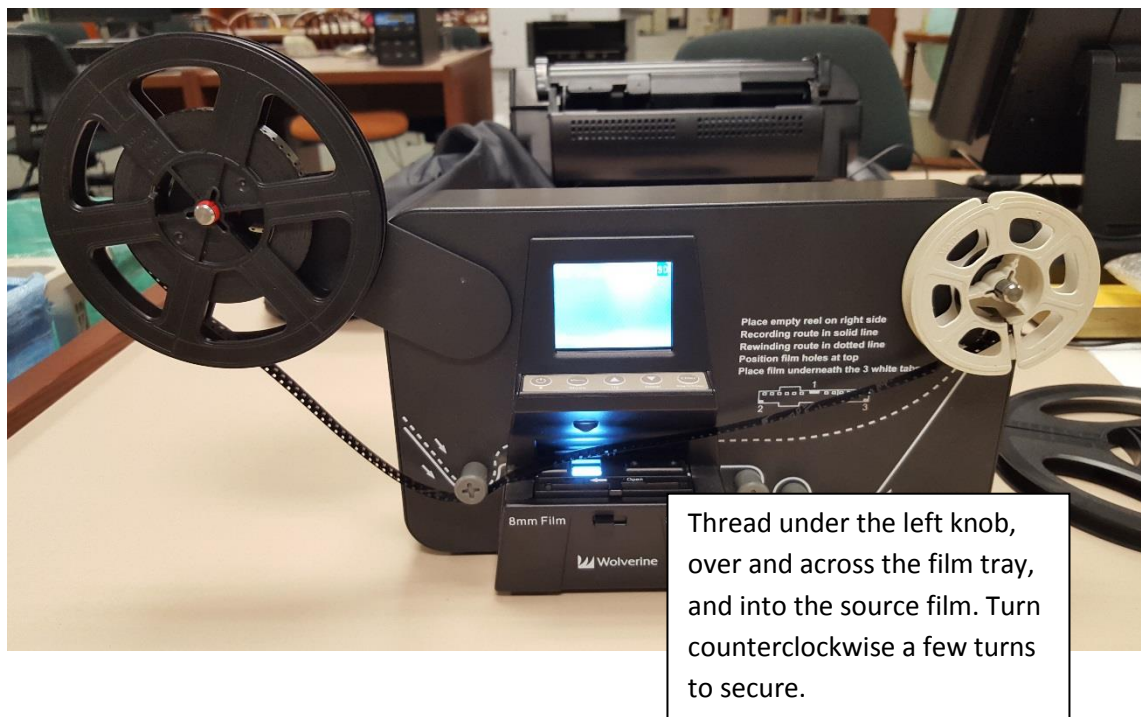
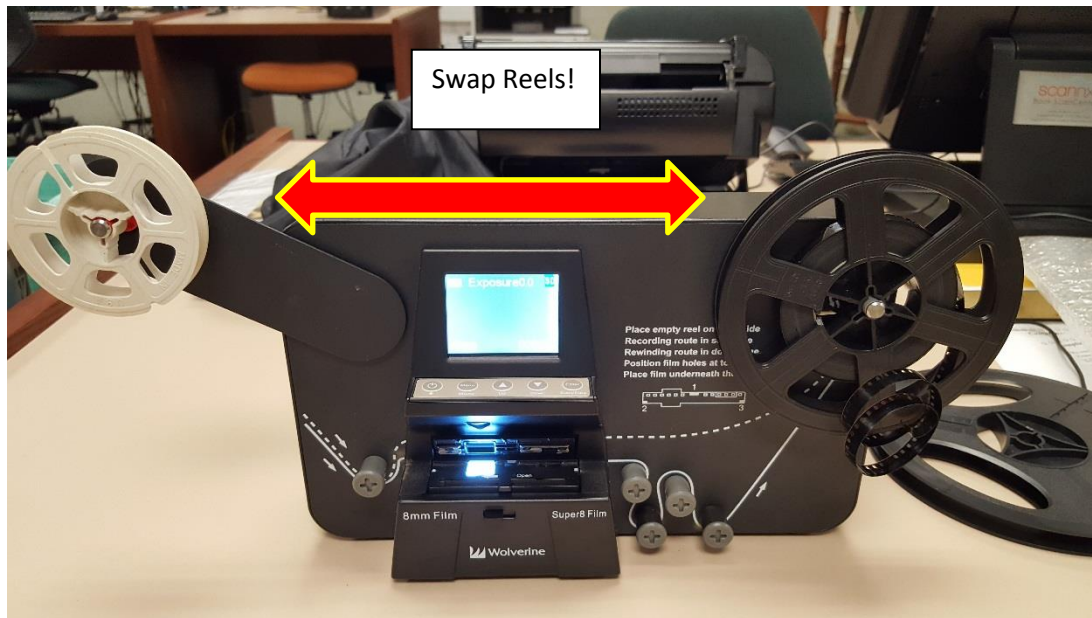
17. Film will progress until it reaches the end of the film strip. If the MovieMaker Pro doesn't stop automatically, press the ENTER Button to stop the recording process.



18. Press the film tray lever to the left to open film tray. Pull free any remaining film from beneath the film tray. Then close the film tray door.



19. You'll next need to rewind your film back onto the source film reel. Swap the Take up reel onto the left arm with the sprocket holes facing TOWARD YOU (away from the machine) Next, move the source reel onto the right arm, using the gray adapter if needed. Thread the film under the left knob, across the top of the film tray (*Don't place film underneath film tray bed for rewind!*) and notch it into the source reel on the right



20. Press the MENU button and navigate using the ARROW buttons to select **REWIND**. Then press ENTER button.



21. The screen below will appear. You've already switched reels, so continue by pressing ENTER one more time.

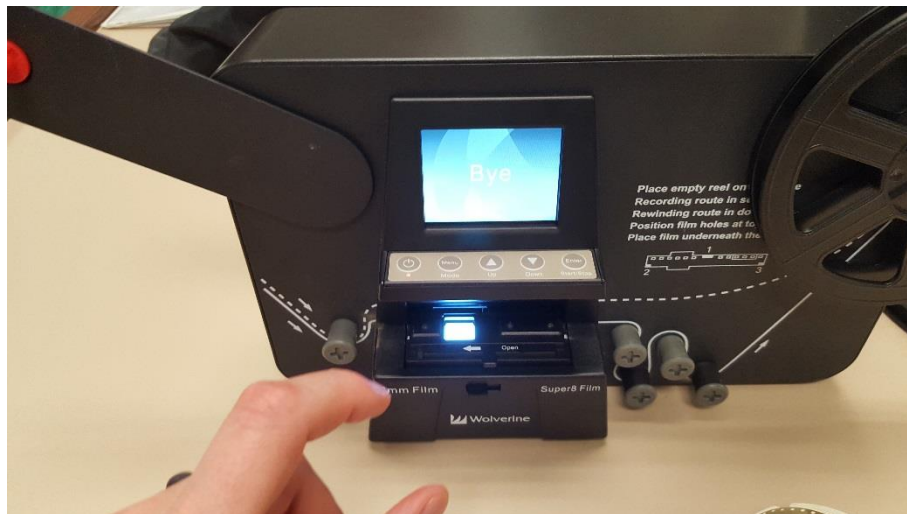




22. The MovieMaker Pro will begin to rewind film back onto the source reel. Once the film is rewound you'll need to press the ENTER button to stop the rewind process.



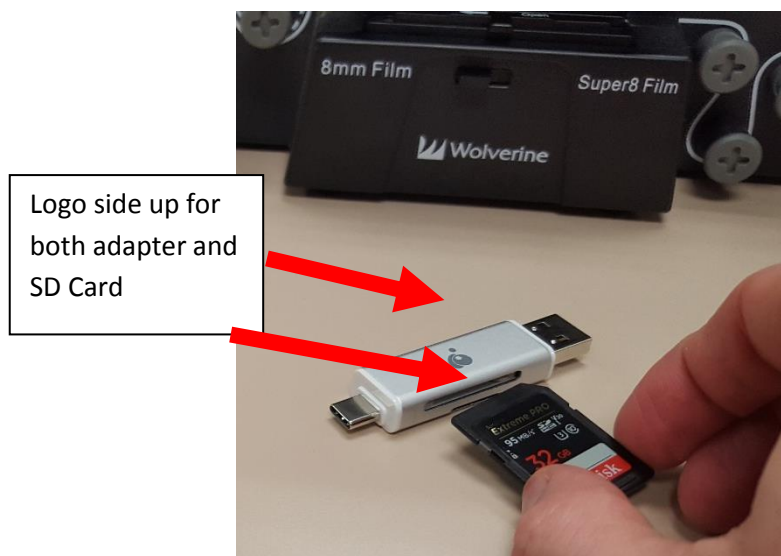
23. If you have more reels to convert, you can go back to step 1 and repeat the process for each film. When you are ready to transfer your movie files to your flashdrive continue to next step.
24. To transfer your converted movie files from the staff's memory card onto your USB flash drive, first turn off the MovieMaker Pro by pressing the POWER button.



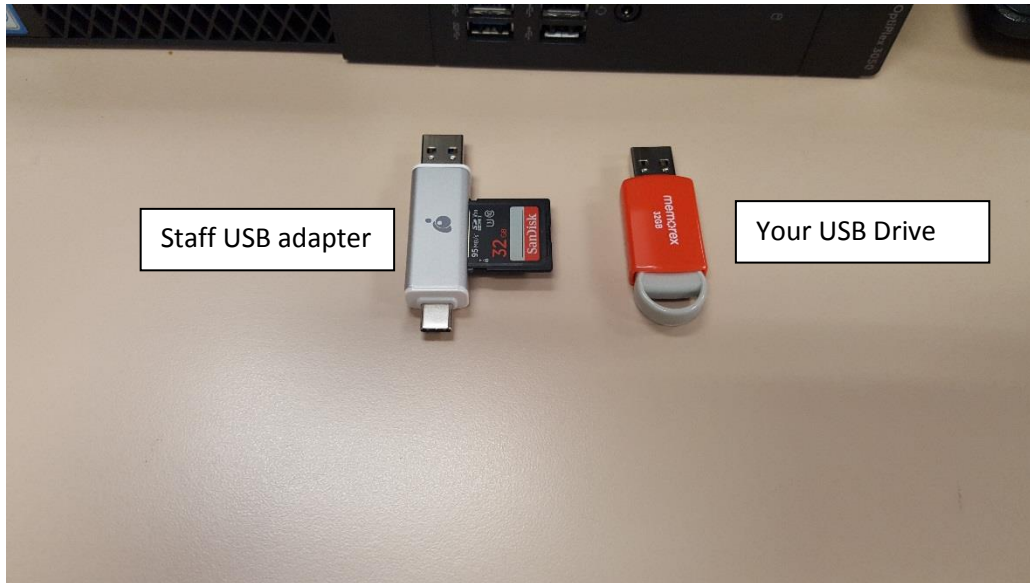
25. Located the SD memory card on the back of the Movie Maker Pro. Press in to eject the card and remove it from device.



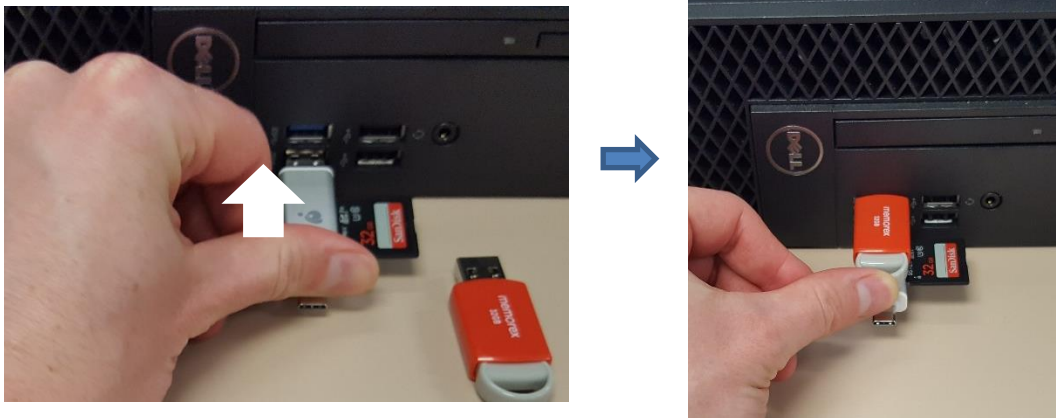
26. Locate the USB adapter (silver) in the pouch by the MovieMaker Pro. Insert the SD card into the larger port on the side of the USB adapter (see image below)




27. You'll now take the silver USB adapter with SD card and your flash drive over to one of the microfilm scanner computers to transfer the files over.

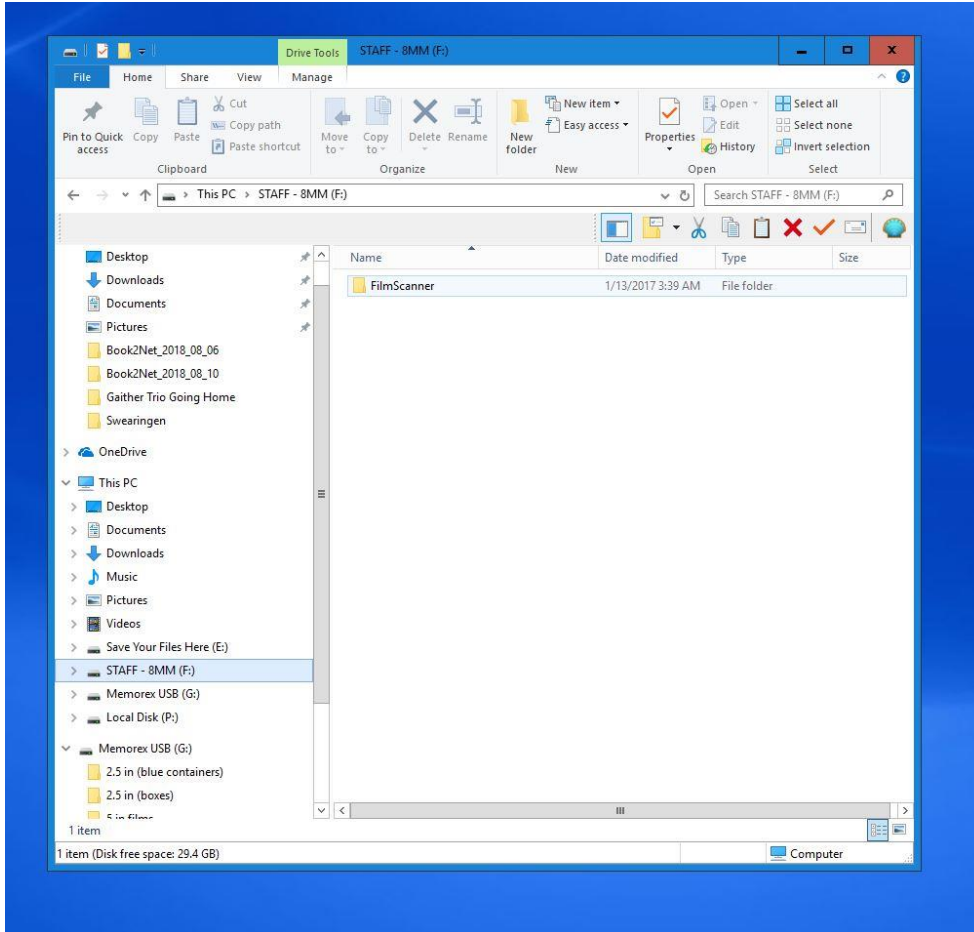


28. Insert both drives into the **BLUE** USB ports on the front of the unit.

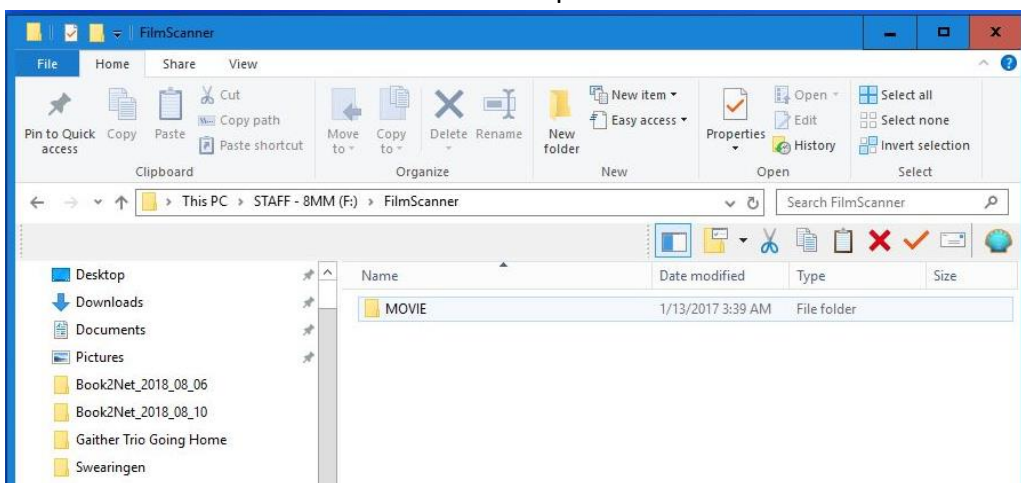




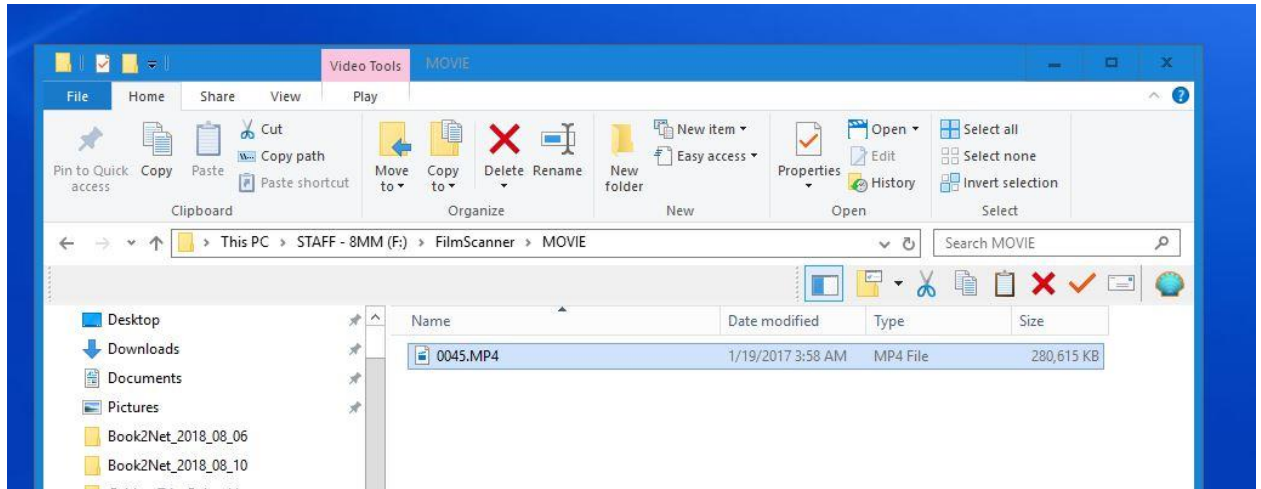
29. Open the File Explorer (  ) Select the STAFF – 8MM drive on the left-side menu panel. Double click on the folder *FilmScanner* to open.



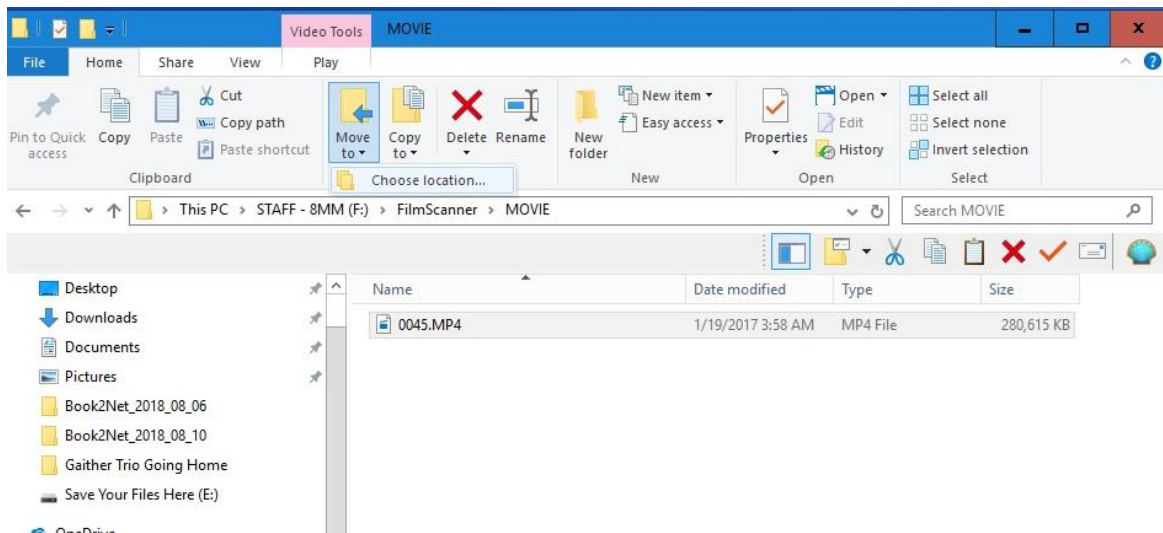
30. Then double click on the folder *Movie* to open.



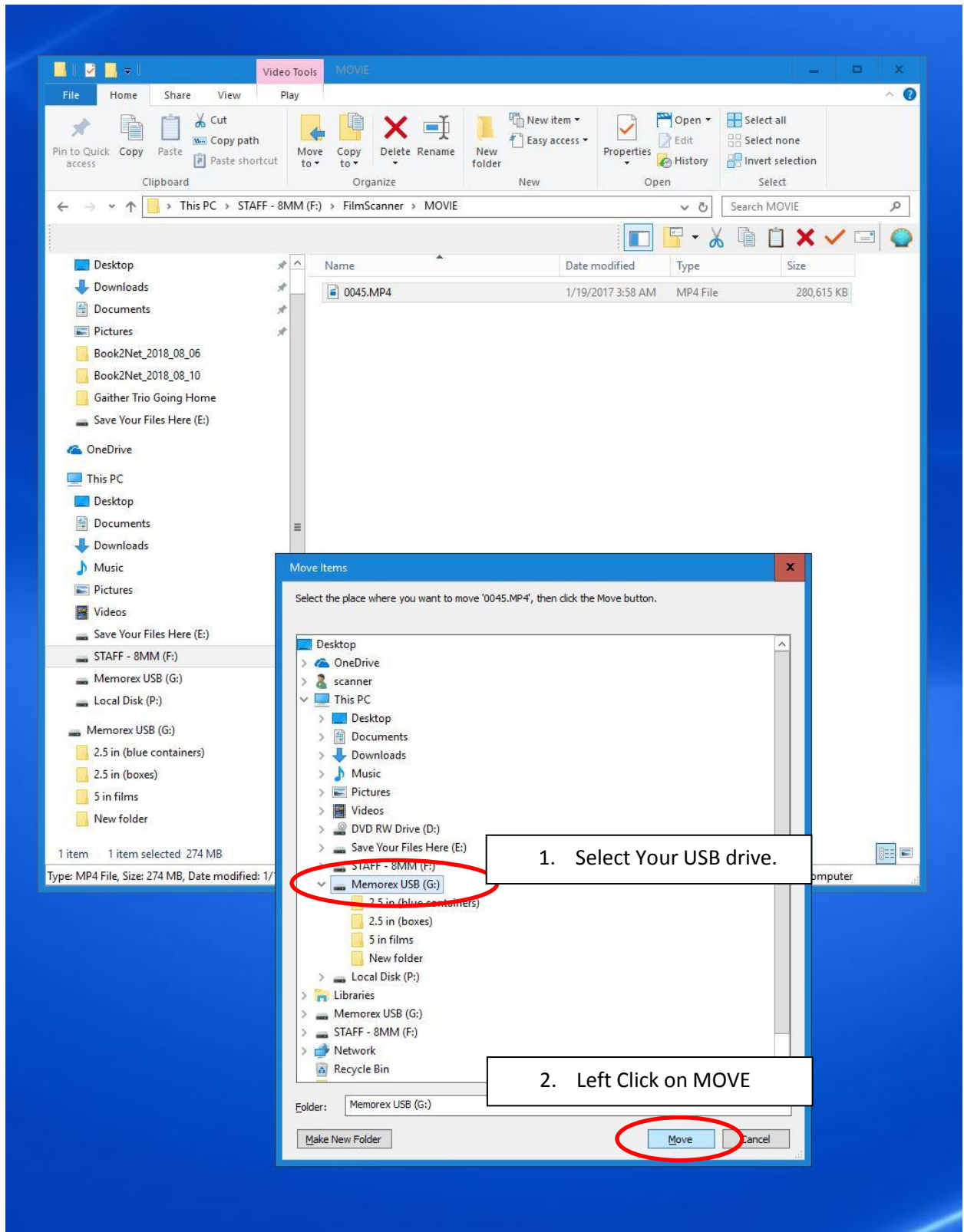
31. The new window will show the video files (.mp4) in numerical order. Left click with the mouse to select all the files (or use the keyboard shortcut control + A to select all). The file name will be highlighted in blue once selected.



32. Left click on the MOVE TO button under the Video Tools Tab at the top of the window. A small popup will appear called "Choose location". Left click on "Choose location"

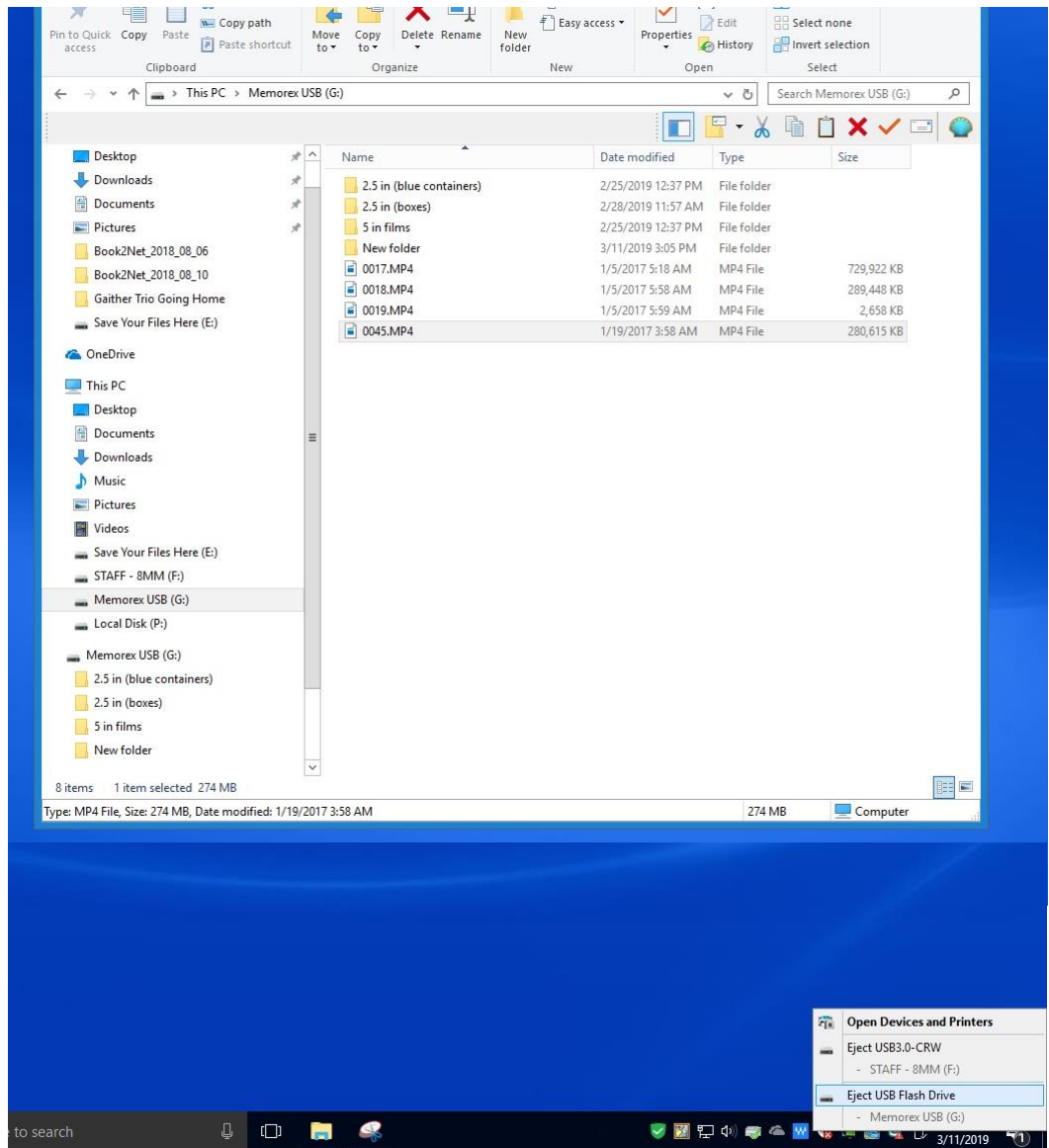


33. A new window pops up called Move Items. In the window select your USB drive. You can create a new folder on your USB drive, or simply transfer them over to your device.





34. The files will be moved over to your flash drive. Once the process is finished, click on your USB drive to double check that the files moved over correctly. Then eject the USB flash drive.



35. Remove the SD card from the silver USB adapter. Insert the SD card back into the slot on the back of the MovieMaker Pro.



36. Return the silver USB adapter back to the pouch next to MovieMaker Pro. Return the black take-up reel onto the right side of the Movie Maker Pro. Don't forget to take your USB drive and source disks home with you.

*Thank you for using our MovieMake Pro! Please feel free to leave a comment in the comment box. We'd love to hear about your experience.*

