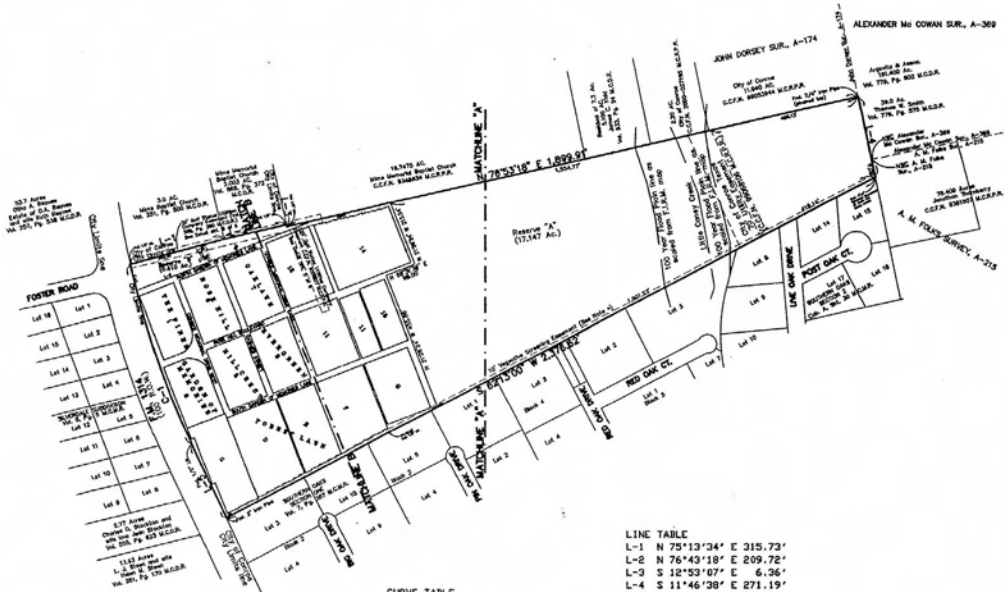
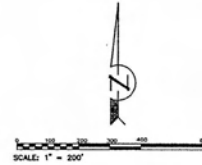


A PERPETUAL CARE CEMETERY
CONROE MEMORIAL CEMETERY
 31.805 ACRES OF LAND IN THE JOHN DORSEY SURVEY, A-174
 MONTGOMERY COUNTY, TEXAS
 BEING A PARTIAL REPLAT OF CONROE MEMORIAL CEMETERY
 VOL. 5, PG. 73 M.C.M.R. & OF CONROE MEMORIAL CEMETERY
 REVISION BLOCK 12, VOL. 5 PG. 180 M.C.M.R. & CONROE MEMORIAL
 CEMETERY BLOCKS 1 & 2 VOL. 5, PG. 53 M.C.M.R. &
 CONROE MEMORIAL CEMETERY VOL. 4, PG. 29 M.C.M.R. &
 THE RESIDUAL OF A 31.8103 ACRE TRACT OF LAND

CONTAINING: 16 BLOCKS
 12,748 LOTS
 200 MAUSOLEUM LOTS
 AND 2 RESERVES

OWNER/DEVELOPER
ALDERWOODS (Texas) CEMETERY, INC.
 11th Floor, Aerie II 3225 Sheppard Avenue East
 Toronto, Ontario Canada M2J 5C2
 (936) 756-2126 & Fax (936) 756-8232



LINE TABLE

L-1	N	75°13'34"	E	315.73'
L-2	N	76°43'18"	E	209.72'
L-3	S	12°53'07"	E	6.36'
L-4	S	11°46'38"	E	271.19'
L-5	N	25°02'00"	W	268.20'
L-6	S	68°31'36"	W	253.39'
L-7	S	21°28'24"	E	16.32'
L-8	S	68°31'36"	W	10.00'
L-9	S	21°28'24"	E	21.00'
L-10	N	68°31'36"	E	10.00'
L-11	S	21°28'24"	E	21.00'

CURVE TABLE

C-1	R = 2,814.80	L = 617.82'
Delta = 12°34'33"		
Chd. = N 19°13'03" W 616.58'		
C-2	R = 2,814.80	L = 87.49'
Delta = 01°46'51"		
Chd. = N 13°49'28" W 87.49'		

JEFFREY MOON
 AND ASSOCIATES, INC.
 LAND SURVEYORS
 P.O. Box 2815
 Georgia, TX 77238
 (281) 796-5058
 Fax (281) 796-5888

65

D:\AUGUST\CORRECTED\Site# 2002136678 Cabinet T Sheet 90